



CRADLE MOUNTAIN
WILDERNESS VILLAGE



WEDDING KIT

2019 / 20 (SEASON)

ROMANTIC



ELOPEMENTS & INTIMATE WEDDINGS

The Wilderness Village is the perfect spot for your romantic elopement. It may be just the two of you – escaping from the world to declare you love, soak up the atmosphere and wilderness of the National Park, or an intimate ceremony and reception with some of your closest friends and family.

We love to help you bring your 'dream wedding' together and have partnered with Pop Up Weddings Tasmania to make sure that you have all of the details covered and looked after by professional locals.





EVERYTHING YOU NEED TO KNOW ABOUT GETTING MARRIED IN THE NATIONAL PARK.

As Cradle Mountain is a national park – there are a few restrictions.

LEGAL REQUIREMENTS

We organise either a celebrant or clergy for your day and make sure that all of your paperwork is completed in plenty of time. To complete your Notice of Intention to Marry you will need to comply with the legal requirements.

To marry in Australia you must be over 18 years of age and have the following documents:

Birth certificate or current/valid passport

If divorced – your decree absolute

If widowed – death certificate of former spouse and previous marriage certificate

If your name has been changed by deed poll – legal proof

If you'd like to bring your own officiant - you're welcome to do this too.

FLOWERS

No 'real' flowers are permitted to be used outdoors in the National Park, this is to protect the current flora and fauna. We are able to use real flowers inside for styling your reception.

CEREMONY 'STYLING'

We are unable to secure any 'structures (ie arbours/arches) in the National Park and to be honest – with a backdrop like Cradle Mountain – you wouldn't want to anyway. The same also applies to styling items like candles, lanterns, chairs, tables and the like. Getting married in the National Park is about being in nature – so it's good to embrace this for your ceremony. There are some great spots to choose from with different outlooks – so you can have some variety.



OUTDOOR LOCATIONS

There are some lovely locations around the National Park that are available for your ceremony.

Pencil Pine Falls	(max 15 people)
Dove Lake Boat Shed	(max 15 people)
Enchanted Walk / King Billy Track	(max 20 people)
Waldheim	(max 30 people)
Dove Lake Car Park	(max 40 people)

Dove Lake car park, Dove Lake boat shed and Waldheim require all of your guests to have park passes and to travel into the park via the shuttle bus service. Your permit and pass for your wedding will allow you to travel in via vehicle. (1 only per wedding)

We have wet weather back up plans should they be needed.
We specialise in intimate wedding so we cater for a maximum of 48.

HAIR AND MAKE UP

We work with the best mobile contractors on the North West Coast and are able to organise your hair and make up to be done in your cabin – based of images of what you'd like. we can also arrange this for additional guests if they would like.

PHOTOGRAPHY

Tasmanias best photographers love to come and capture weddings at Cradle Mountain and we have secured special rates for weddings with Pop Up Weddings Tasmania. We give you a choice of photographers – so you're able to pick someone who's style fits with your taste.

VIDEOGRAPHY

Pop Up Weddings Tasmania also have access to videography to capture your day if you'd like. Ask us about details – these can be added to your package.

CAKES

Would you like to have a wedding cake – just for the two of you – or for everyone to share? We can organise any type/style of cake to suit your day. You choose your flavour and design. We can also organise 'cheese towers', cupcakes or cheesecakes. Anything that takes your fancy. Just let us know.





SO WHAT IS ON OFFER AT THE WILDERNESS VILLAGE?

PREMIUM SPA COTTAGE - FROM \$288 PER NIGHT

These modern and stylish cottages are the ultimate wilderness retreat for couples or a single traveller wanting some indulgence.

SPA COTTAGE - FROM \$279 PER NIGHT

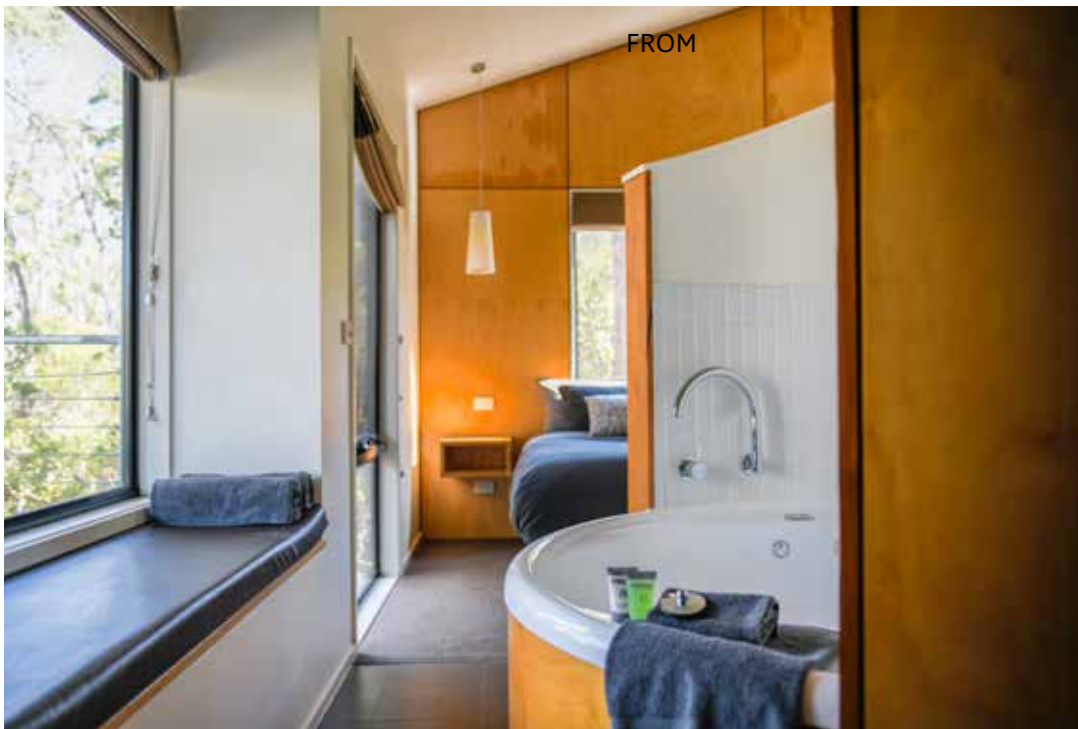
Just for couples, these cottages are the ultimate wilderness retreat. Featuring a King bed with an ensuite bathroom adjacent to the living area with a cosy gas fire and a central spa bath.

DOUBLE QUEEN CHALET - FROM \$279 PER NIGHT

The private self contained 2 bedroom chalet, features two bedrooms with a queen bed in each. Along with a separate large living area, the chalet is perfect accommodation for couples travelling together.

VILLA - FROM \$270 PER NIGHT

The private self contained 2 bedroom chalet, features one room with a queen bed along with second bedroom with two sets of bunk beds. Along with a separate large living area, the chalet is perfect accommodation for larger families or travelling group, up to 6 people.





PREMIUM CHALET - FROM \$333 PER NIGHT

The 2 Bedroom Premium Chalet features one room with a queen bed along with the second bedroom with two King singles.

CHALET - FROM \$270 PER NIGHT

This private and cosy self contained 2 bedroom chalet, features a queen and two single beds at either end of a central living area. The chalet suits families or two couples travelling together.

STUDIO COTTAGE - FROM \$216 PER NIGHT

This cosy 1 bedroom cottage with open plan layout features a queen bed in the main living area and separate room with single bed. This cottage is perfect for couples travelling alone or with a child.



RESTAURANT

Our restaurant offers a selection of small plates designed to share with family and friends. Our dishes are all made to order and contain fresh seasonal local produce which we believe highlights the best that our island state has to offer.

Our dining experience will encourage everyone to relax, enjoy some conversation and sample some wholesome Tasmanian cuisine. We also offer a separate room for you and your guests to celebrate your union in private.
(minimum 10 guests – maximum 26 guests)

6 share presentation menu \$85 per person

4 share presentation menu \$65 per person



WEDDING

∞

P A C K A G E S

we've put together some packages to take the guest work out of planning your day.

ROMANTIC ELOPEMENT PACKAGE

THE PACKAGE INCLUDES:

- 2 nights accommodation in a premium spa cottage including your daily breakfast pack
- Local celebrant including all legal paperwork and a personalised ceremony
- Hand tied bouquet and buttonhole (artificial flowers only)
- Brides hair and make up (in your cabin)
- National Parks and Wildlife permission and permit
- Professional photography including 100 images on a USB
- 3 course wedding night dinner in Hellyers Restaurant including a bottle of Ghost Rock sparkling wine

TOTAL COST

\$3,550.00

BASED ON A NON SATURDAY WEDDING DATE

INTIMATE WEDDING & RECEPTION

(F O R 2 0 P E O P L E)

THE PACKAGE INCLUDES:

- 2 nights accommodation in a premium spa cottage including your daily breakfast pack
- Celebrant including all legal paperwork and a personalised ceremony
- Hand tied bouquet and buttonhole (artificial flowers only)
- Brides hair and make up (in your cabin)
- National Parks and Wildlife permission and permit
- Professional photography including 150 images on a USB
- Set up and basic styling of a private room for your wedding dinner in the Wildernes Village Restaurant
- Wedding night dinner (4 shared plate menu) for 20 people
- Wedding cake (to be served as dessert) for 20 people

TOTAL COST

\$5,890.00

BASED ON A NON SATURDAY WEDDING DATE

TAILORED WEDDING PACKAGES

Of course the packages we have are an indication of what we can do. We are also happy to tailor something specific to suit your needs and requirements. Just get in touch and let us know what you have in mind.





TERMS & CONDITIONS

A contract will be sent to you as confirmation of your booking from Pop Up Weddings Tasmania.

A non-refundable deposit is required to secure your booking. (this amount will vary depending on your package)

Final payment is required no later than 60 days prior to your wedding date.

SO WHAT ARE WE MISSING?

Couples names:

Date of wedding:

Number of guests:

Number of nights accommodation:

& Anything else you think we need to know.

Please send your enquiry to:

marryus@popupweddingstasmania.com.au